

Sinclair  Hammelton



GUIDE PRICE

£600,000

Streamside Close

, BR2 9BH

PROPERTY SUMMARY

Guide price £600,000-£650,000 Sinclair Hammelton are proud to bring to the market this four bedroom semi-detached house in a quiet cul-de-sac in Bromley South. Conveniently located being 0.2 mile from Bromley South Station and High Street with its array of shops, bars, restaurants and cinema. Living accommodation comprises a porch, entrance hallway, W/C, a bright kitchen and a spacious living/dining room with sliding doors onto a secluded private garden. To the first floor there are four bedrooms, family bathroom and ample storage. Externally there are solar panels, a garage, off street parking, secluded mature garden with patio seating area, gas central heating and double glazing. Viewings highly recommended.

EPC: B
COUNCIL TAX - E
Construction - Traditional
Mains Services - Gas, Electricity, Sewerage and metered Water supply
Heating System - Gas radiators
Broadband - Yes
Mobile coverage - Yes
Restrictive covenants - No

4



1



1







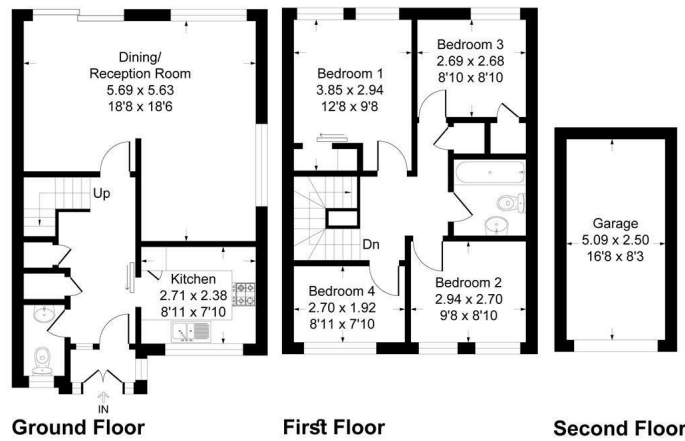
Streamside Close, BR2

Approximate Gross Internal Area = 97.8 sq m / 1053 sq ft

Garage = 12.7 sq m / 137 sq ft

Total = 110.6 sq m / 1190 sq ft

Garden
9.50 x 6.04
31'2 x 19'10
(Approx)



This plan is for layout guidance only. Not drawn to scale unless stated. Windows and door openings are approximate. Whilst every care is taken in the preparation of this plan, please check all dimensions, shapes and compass bearings before making any decisions reliant upon them.
Produced By Planpix

4
1
1

Energy Efficiency Rating		
	Current	Potential
Very energy efficient - lower running costs		
(92 plus) A		
(81-91) B	87	91
(69-80) C		
(55-68) D		
(39-54) E		
(21-38) F		
(1-20) G		
Not energy efficient - higher running costs		
England & Wales	EU Directive 2002/91/EC	

EPC RATING: B COUNCIL TAX BAND: E

Agents Note: Whilst every care has been taken to prepare these particulars, they are for guidance purposes only. All measurements are approximate and are for general guidance purposes only and whilst every care has been taken to ensure their accuracy, they should not be relied upon and potential buyers/tenants are advised to recheck the measurements

Sinclair Hammelton

OFFICE ADDRESS

23 High Street
Bromley
Kent
BR1 1LG

OFFICE DETAILS

0208 464 5566
info@sinclairhammelton.co.uk